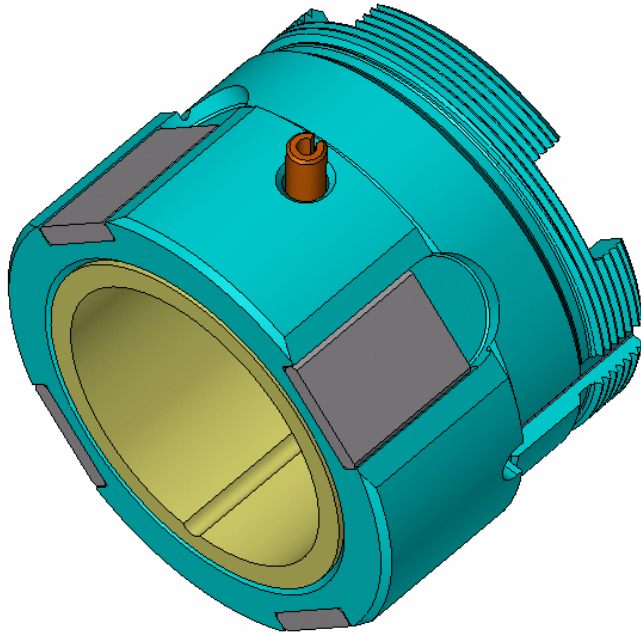




## New Product Bulletin

### 5080-131-3

### Roll Away Clutch Body w/Wear Plates



This is a re-design of our standard 5080-131 Clutch Body. The new **Roll Away Clutch Body** now accepts 4 hardened wear plates. These wear plates can be flipped end over end, and spun around on each side, exposing 4 different wear zones per plate to the roller load.

As a result, when an old-style 5080-131 would need to be discarded because the rollers had dented the body, the wear plates on the new 5080-131-3 can be quickly flipped to a new edge, and will last 4x longer, all for a lower price.

In addition, once the wear plates are all used up, they can be replaced at a fraction of the cost of the body. For the same cost of just (1) old-style body, you can get **over 12 times the life** out of (1) new 5080-131-3 and (2) extra wear plate replacement kits.

#### New Features:

- Lower *initial* cost.
- MUCH lower long-term cost of ownership with reduced repair costs.
- 4 times longer life than previous design.
- At least 12 times longer life with in-expensive replacement parts
- 100% interchangeability with genuine Davenport Machine OEM parts.
- 100% of the performance of the standard design.

Our knowledgeable and courteous sales staff at  
**Hye-Tech Machine Enterprises Inc**

is ready to assist you.

Please give us a call

Toll Free: 888-484-9900